



**HYPARC**  
Residences  
Hangdong



# HYPARC RESIDENCES HANGDONG

| LIFESTYLES REIMAGINED

THE LUXURY CONDOMINIUM IN HANG DONG, CHIANG MAI



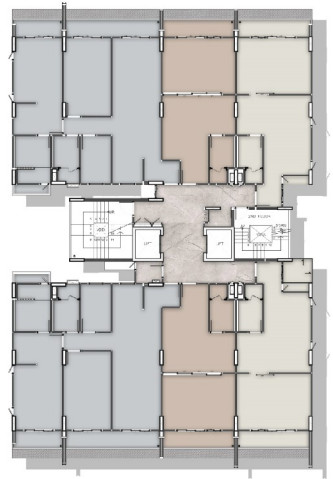
**HYLIFE**  
DEVELOPMENTS

# FLOOR PLAN

## GROUND FLOOR



## 2<sup>nd</sup> - 7<sup>th</sup> FLOOR



TYPE A

TYPE B

TYPE C

## HYPARC RESIDENCES HANGDONG

THE HYPARC RESIDENCES HARMONISES THE THREE PRONGS OF SERENITY, PRIVACY AND NATURE TO CREATE A SPLENDID NEW ENVIRONMENT THAT DELIVERS THE LUXURIOUS COMFORT OF RESORT LIVING.

### TYPE A



### TYPE B



### TYPE C



### LOBBY



### CO-WORKING SPACE

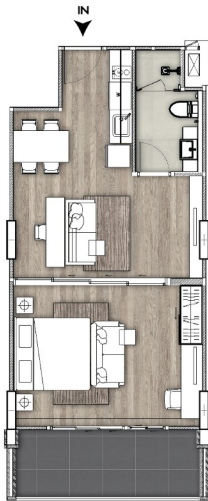


### SAUNA



# ROOM TYPE

**TYPE A**



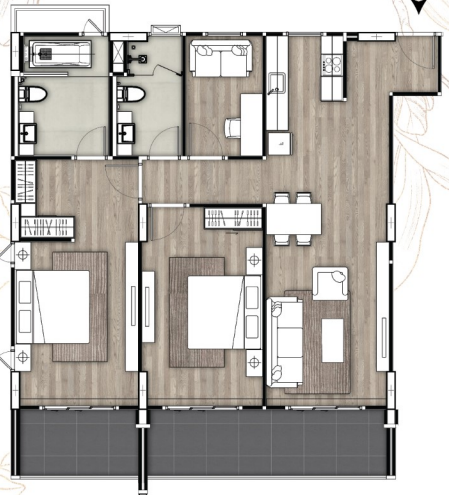
**1 BEDROOM**  
56 sq.m. approx.

**TYPE B**



**1 BEDROOM**  
60 sq.m. approx.

**TYPE C**



**2 BEDROOMS**  
116 sq.m. approx.

**SWIMMING POOL & JACUZZI (size of 6 m x 50 m)**



**FITNESS CENTRE**



**YOGA ROOM**



**SAUNA**



**CINEMA ROOM**



## PROJECT INFORMATION

Location :	Hang Dong District, Nearby Kad Farang Village, International Schools	
Land Area :	HyParc Phase 1	1-0-84.35 Rai (approx.)
Facility & Servitude		1-0-65.30 Rai (approx.)
Project Type :	7-Storey Low Rise Condominium	
Number of Unit :	41 units	
Parking :	44% (approx.)	
Unit Details :	1 Bedroom 56-63 sq.m. (approx.)	
	2 Bedrooms 116-123 sq.m. (approx.)	

# LOCATION



## LIFESTYLES REIMAGINED

SERENE AMBIENCE IN THE LAP OF NATURE



FOR MORE INFORMATION  
PLEASE SCAN QR CODE

TEL. (+66) 65 915 3462